



## Post-Baccalaureate Certificate Program in Interventional Cardiovascular Technology

This program will help you complete your educational requirements and prepare for national certification examinations in invasive cardiovascular technology. Students may enroll at any point in the curriculum and be finished in as little as two semesters. There is an optional clinical course offered for those needing competency requirements. This program is offered **100% ONLINE!**

### ALHE 4910: Invasive Cardiovascular Procedures

Explore angiographic approaches to diagnostic and interventional procedures performed in a cardiovascular lab. Topics covered include patient positioning during interventional cardiac procedures, cardiac anatomy and pathology, radiation protection, and image critique.

### ALHE 4920: Cardiovascular Imaging Equipment

Cover advanced interventional equipment and physiologic monitoring equipment. This course will explore the inventory used in interventional cardiovascular lab, including automatic injectors, catheters, guide wires, needles, intravascular ultrasound, and other equipment.

### ALHE 4930: Cardiovascular Patient Care

Identify the patient care skills needed to be proficient in the invasive cardiovascular lab. Topics covered will include the physical assessment of the patient, pre- and post-procedure monitoring of the patient, and evaluation of access sites.

### ALHE 4940: Cardiovascular Hemodynamics

Identify normal and abnormal hemodynamic pressures and waveforms. Students will also be taught advanced mathematical calculations and conversions related to cardiovascular hemodynamics.

*\*Flexible enrollment*

*\*Entire program may be completed in only two semesters.*

*\*No out of state tuition for 100% online students*

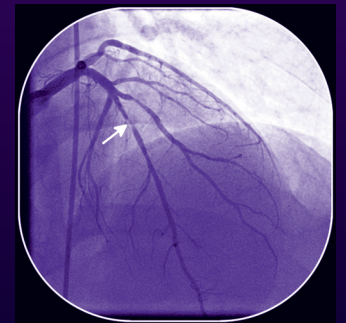
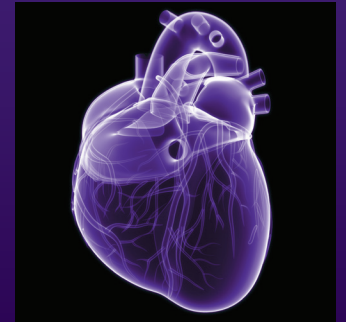
### For more information:

email [alliedhealth@nsula.edu](mailto:alliedhealth@nsula.edu)

or call 318-677-3020

Northwestern State University is accredited by the Southern Association of Colleges and Schools Commission on Colleges to award associate, baccalaureate, master's, specialist's, and doctorate degrees. Contact the Commission on Colleges at 1866 Southern Lane, Decatur, Georgia 30033-4097 or call 404-679-4500 for questions about the accreditation of Northwestern State University.

Northwestern State University does not discriminate on the basis of race, color, gender, religion, sexual orientation, national origin, disability, genetic information, age, pregnancy or parenting status, and veteran or retirement status in its programs and activities and provides equal access to the Boy Scouts and other designated youth groups. The following individuals have been designated to handle inquiries regarding non-discrimination policies (i.e., Title IX): Employees/Potential Employees – Veronica M. Biscoe, EEO Officer (318-357-6359) and Students – Frances Conine, Dean of Students (318-357-5285). For Americans with Disabilities Act (ADA) concerns, contact the Disability Support Director, Randi Washington, at 318-357-5460. Additionally, Northwestern complies with the Jeanne Clery Disclosure of Campus Security Policy & Campus Crime Statistics Act. Information about NSU's campus security and crime statistics can be found at <https://www.nsula.edu/universityaffairs/police/>. Full disclosure statement: <http://universityplanning.nsula.edu/notice-of-non-discrimination>.



For more information  
go to:

[nursing.nsula.edu/  
allied-health-  
programs/](http://nursing.nsula.edu/allied-health-programs/)