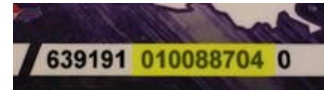


No need to log in to use **Find It at NSU!**; however, to access certain full text resources off campus, you'll need to log in.

You'll find your campus-wide ID number at the bottom of your **NSU One Card**.



Online student campus-wide ID numbers appear on your student registration. Some older campus-wide ID numbers are 8 digits, so you'll need to add a front leading zero (0) to make your number 9 digits. Your password is your six-digit birthdate: mmddyy

Use the **Campus-wide ID** to Log into access your account for answers about library check outs, fines or renewals. There's also a place for lists you want to keep. Access it inside the **Find It at NSU!** search engine, or **Library Catalog Search**.



Your **USER ID** is your **Campus-Wide ID Number**.
PIN is your birth date expressed as 6 digits in the **mmddyy** format with no spaces or hyphens.

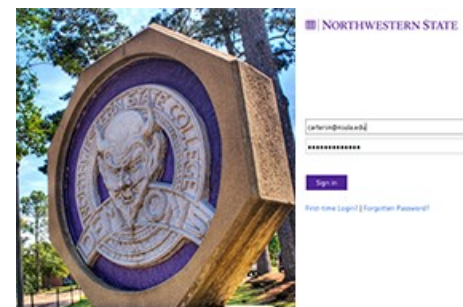
Username:
Password:

Log In

When accessing the Database Directory from off-campus, you'll reach a page asking if you're a NSU or LSMSA user.



After ticking your choice, NSU users apply the same login you use for **myNSU**, your email name and password.



LSMSA Students and faculty use your **ID number** and date of birth expressed as **mmddyy**.



Log in with LSMSA or Friends of the Library username and password

Please enter your username:
Please enter your password:

Log In