

Early Field Experiences

Orientation





Dr. Wendi O'Halloran

**Director of Clinical Practice
and Partnerships**

Office B 107 TEC

357-4549

ohalloranw@nsula.edu



Purposes of Field Experiences

- Integral part of all education programs
- Provides for observations and clinical experiences in a variety of instructional settings
- Approximately 180 hours necessary before residency. (logs and on electronic form)

Levels of Field Experience

LEVEL 0

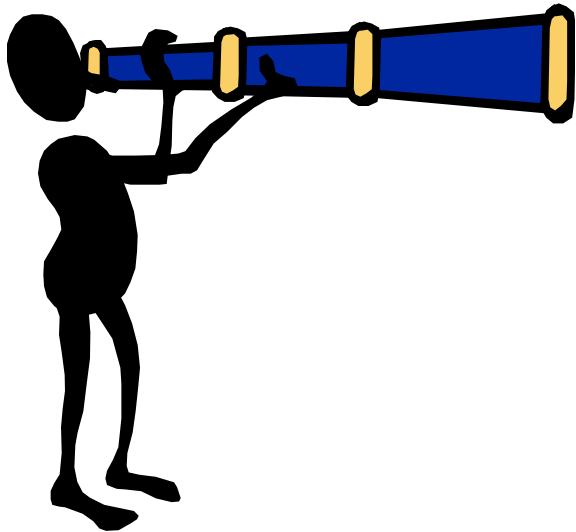


When the candidate participates in assigned field experiences that do not involve direct interaction with students. For example: teacher interviews, professional development activities, simulations and other virtual learning opportunities

ALL ATLAS VIRTUAL OBSERVATIONS ARE LEVEL 0.

Levels of Field Experience

LEVEL 1



When the candidate purposefully watches and collects data on a teaching-learning situation implemented by the cooperating teacher.

Levels of Field Experience

LEVEL 2



When the teacher candidate is actively involved and assisting the cooperating teacher in school, classroom, and professional activities, including individual and small group tutoring.

Levels of Field Experience

LEVEL 3



When the teacher candidate assumes primary responsibility for teaching pupils in a small or whole group situation.

Conceptual Framework

- Responsibility Taking
- Decision-Making
- Creative/Critical Thinking
- Problem-Solving



What is needed? **FOR FACE-TO-FACE ONLY**

- **Background check**
- **Uploading of field experience hours**
- **NSU ID/badge holder**
- **Field experience log sheet for verification and documentation**
- **Class assignment information and documents**
- **Appropriate dress**
- **You MUST sign in/out at the school's main office.**

Background Check **FOR FACE-TO-FACE ONLY**

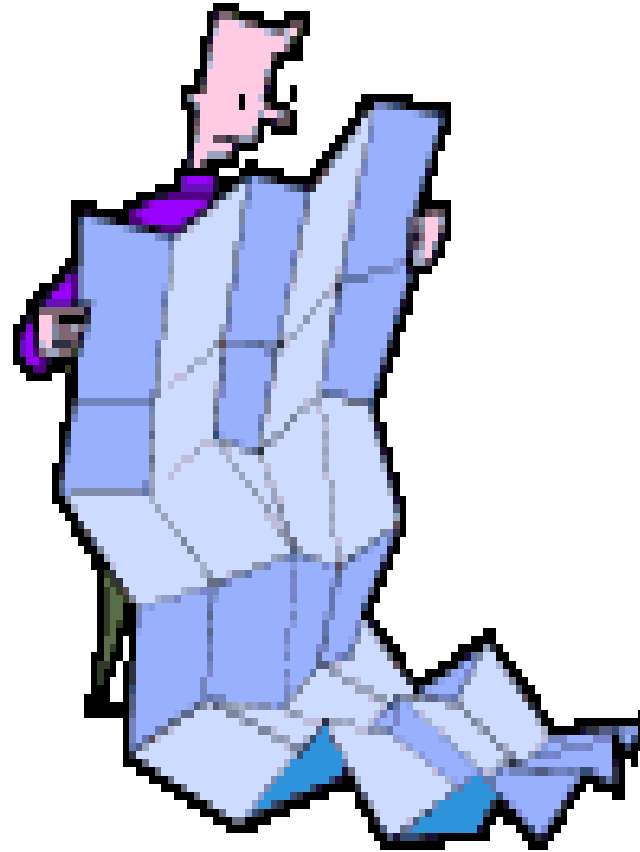
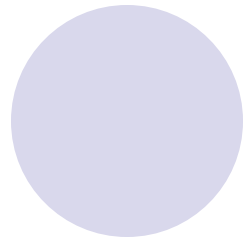
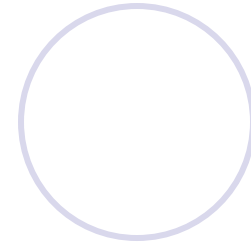
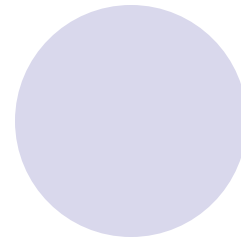
- Required for Natchitoches Parish

- Obtain cards from Office of Field Experience 115-B
- Follow instructions as per handout given with fingerprint cards (changes every semester)

- Other districts

- Must adhere to each district's policies & fees
- Rapides Parish--Very strict-
- Other districts: Contact Human Resources to find out policies & fees
- Fill out Permission of FE outside of Natchitoches form. [School Permission for field experience outside of Natchitoches Parish](#)

Where Do I Go?



Natchitoches Central High School Required Orientation

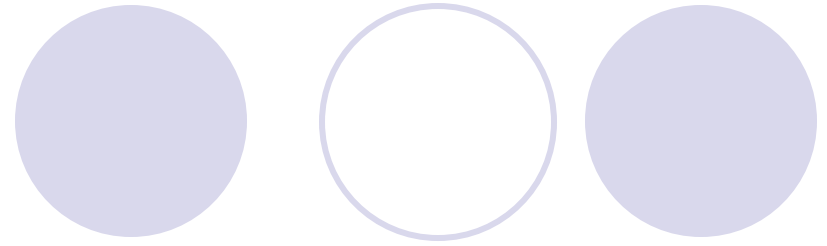
- Dates will be posted soon. Watch for an announcement in Moodle.
- You must attend one of these sessions in order to observe at NCHS.

Prior to Observation



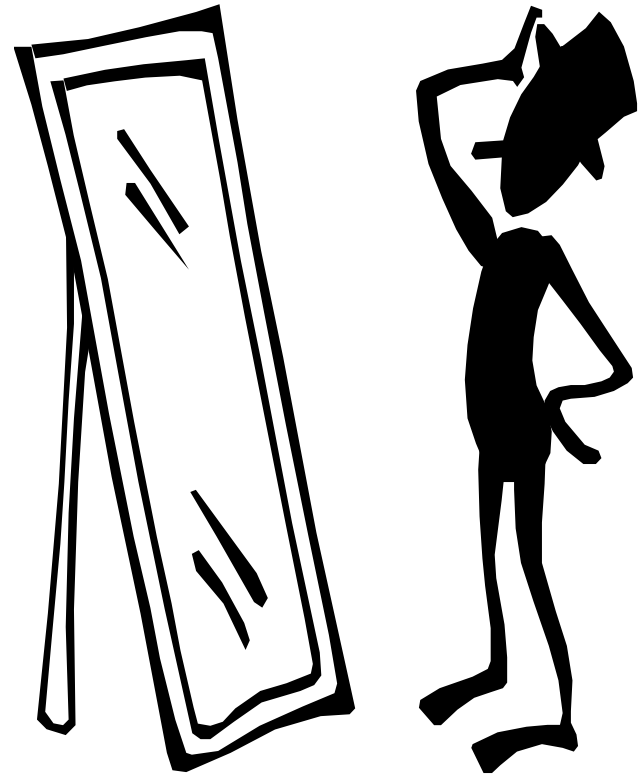
- Review course assignments
 - What grade level? What purpose?
- Select approved sites and classrooms for observation
- Make a pre-visit to the school
 - Find office and confirm sign-in/sign out procedure
 - Check bell schedules and determine times for observation
 - **DO NOT CALL THE SCHOOL**
- Plan dates for observation

Day of Observation

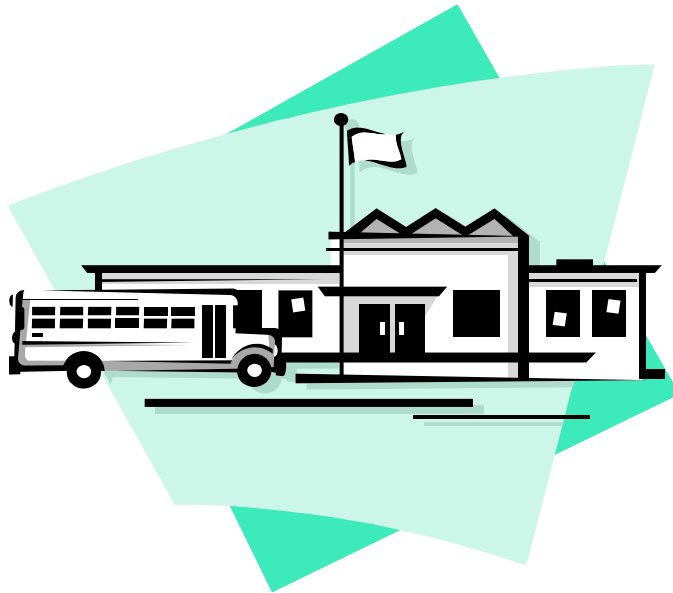


● WHAT **NOT** TO **WEAR**

- Jeans
- Shorts
- Tank tops
- Caps or hats
- See through blouses
- Midriffs or low cut tops
- Flip-flops
- No bare feet

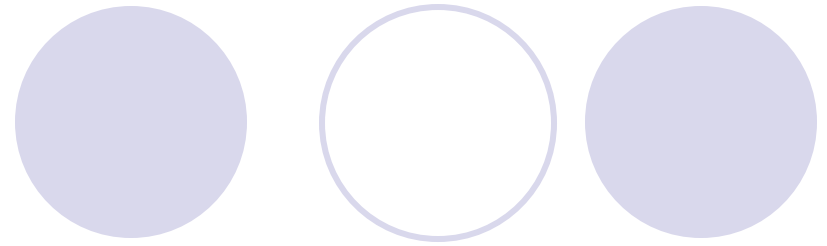


Day of Observation



- Arrive at school in timely fashion (early)
- Sign in according to school procedure
- Wear NSU identification
- Bring Field Experience Log
- Know purpose of observation and have necessary materials

You are a visitor!



- Principals and cooperating teachers have the right to refuse observers in their schools or classrooms for:
 - Failure to dress appropriately
 - Lack of NSU identification
 - Failure to follow proper procedure or guidelines
 - Inappropriate conduct in the classroom
 - Time of observation is not suitable to observation purposes

During the Observation



- Observe professional courtesies
- Be mindful of instructional activities and do not interrupt
- Turn off cell phones or leave phones in car
- Gum, candy, soft drinks, coffee not allowed
- Refrain from visiting

During the Observation



- Complete classroom data form
- Engage in behaviors appropriate to purpose of field experience assignment
- Be attentive



Documentation of FE/Observations

All field experience
is documented
as clock minutes



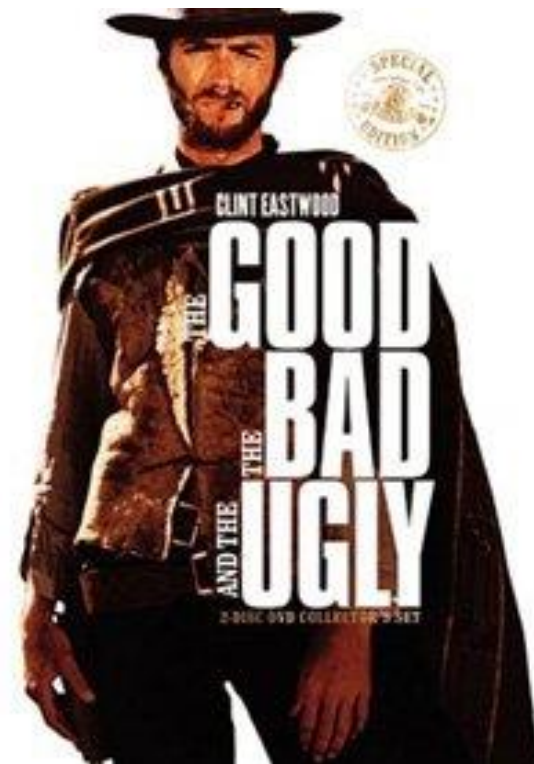
At the end of the observation

- Display professional courtesy
- Obtain signatures at the end of the class period



After the Observation

- Reflect on the field experience



After the Observation

Documentation

- **Complete data form for each observation including all demographic information**
- **Check that you have obtained teacher's signature on log sheet for each observation**



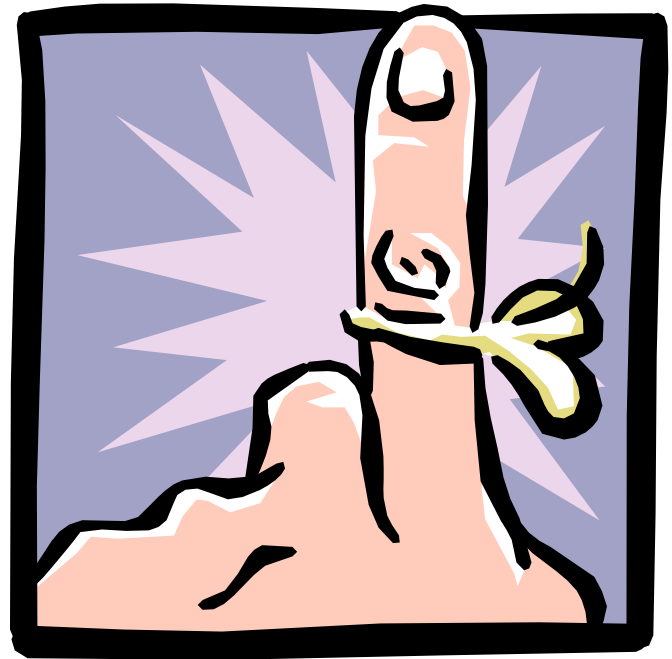
Academic dishonesty

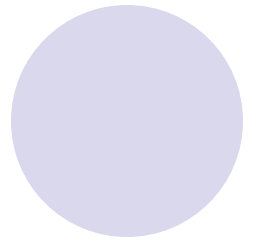
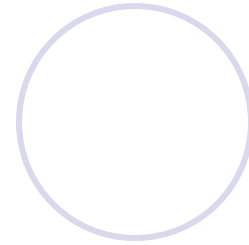
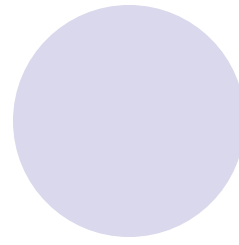
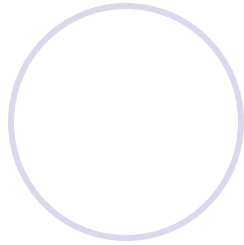
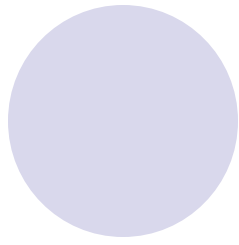


- Participants in NSU courses guarantee that all academic class work is original.
- Any academic dishonesty or plagiarism is a violation of student academic behavior standards and is subject to academic disciplinary action, such as receiving an “F” in the course and/or expulsion from the university and your graduate program.
- Academic dishonesty includes infractions in documentation of field experience hours.
- False documentation of field experience hours will result in receiving an “F” in the course and referral to appropriate University disciplinary committees.

Remember !

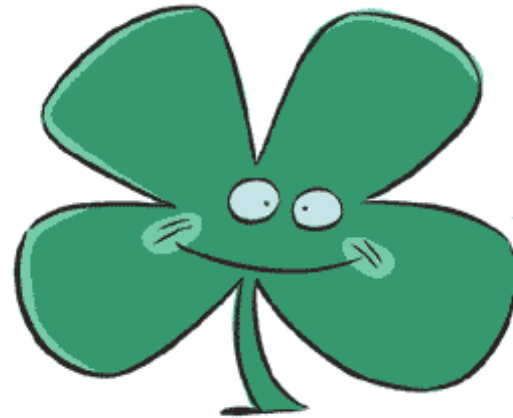
Required observations for one class may not be used to meet required observations for another class.





- Contact instructor or Office of Field Experiences with concerns or questions.

Good Luck





Residency

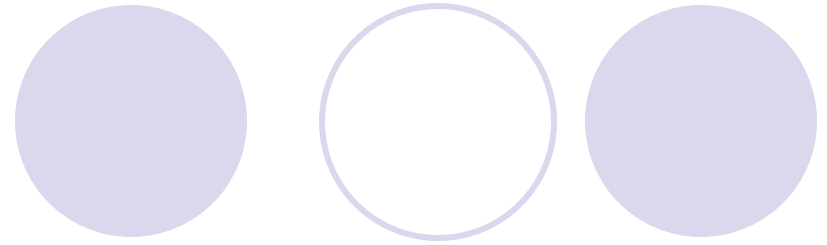
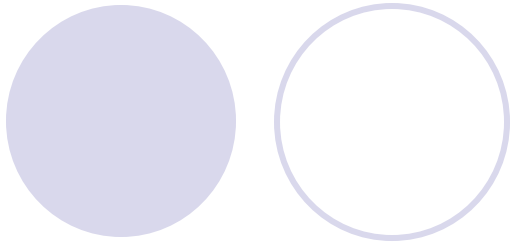
You will fill out an application the semester BEFORE you want to begin residency.

It is best to have passed both Praxis exams PRIOR to applying for residency.

Residency is a two-semester internship. You are required to be on your assigned campus 5 days a week for a full day. (Exceptions granted for required courses to graduate on given on an individual basis). Residents follow the district calendar.

Secondary majors are not permitted to conduct their residency at the high school they attended.

No one can be placed at a school where an immediate family member is employed.



RESIDENCY I:

LEVEL 3 = 80 HOURS (5 days bell to bell teaching)

LEVEL 1 & 2 = 300 HOURS

RESIDENCY II:

LEVEL 3 = 180 HOURS (10 DAYS BELL TO BELL AND 5 MUST BE CONSECUTIVE)

LEVEL 1 & 2 = 180 HOURS

Residency Expectations



- Must maintain a “C” or better in Residency and all other courses taken with Residency.
- 80% of the coursework based on formal evaluations of teaching and professional dispositions.
- Must score a 70% or better on the Professional Portfolio each semester.